



PENTAIR



STRUCTURAL SUPER TANKS

DESIGN YOUR OWN TANK'S SPECIFICATION

WHAT'S SO SUPER ABOUT SUPER TANKS

Structural's Super tanks range has been created to enable customers to customize the specification of their tank. In today's world where every installation has got its own specific particularities, proposing the exact product with the exact specification rather than a standard solution can make the difference between winning or losing a contract. The made-to-measure pressure tanks from Structural are the complete solution for the treatment, storage and transport of fluids or bulk products. The super quality of their composite

materials sets Structural's high-pressure tanks in a class of their own: they are not only robust, corrosion-free and resistant to extreme conditions, but also light-weight, easy to handle and built to the highest industry standards. Structural's seamless clean-vessel technology offers optimal contamination protection for toxic fluids handling. The vast choice of configurations permits today to easily design THE special tank that perfectly matches your requirements.

OPTIONAL

CUSTOM DESIGN

- Manhole sight glasses
- Range connections
- Distribution systems
- Mounting bracket
- Support frame/trolley

STANDARD

FIBER REINFORCEMENT

- Lightweight
- Easy to handle
- Standard color: blue RAL 5015

OPTIONAL

WIDE CHOICE OF INNER LINERS

Liners can be chosen according to the needs:

- PE for standard water treatment
- PVDF for specific application (high temperature, specific chemical resistance...).
- Both materials are drinking-water approved by the highest industry standards (FDA)

STANDARD

SEAMLESS CLEAN VESSEL TECHNOLOGY

This is achieved by a unique liner that protects the integrity of the tank, with following advantages:

- No leakage
- No corrosion
- 100% contamination protection

STANDARD

RESISTANT COATING

A surface treatment in Epoxy resin protects against the corrosion and makes it unnecessary for the customers to repaint the tank during the yearly system maintenance



SPECIAL BENEFIT

Built to your needs: specific pressure, volume and dimensional request
Rapid and simple Installation
Certification: KTW, ACS and CE PED. Other regional certifications as well as ASME calculations are available upon request

4 STEPS TO FOLLOW TO CUSTOMIZE YOUR...

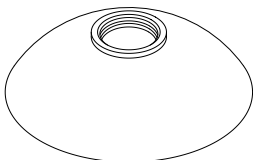
► STEP 1: SELECT THE SIZE AND VOLUME

MADE TO MEASURE TANK MODELS												
Diameter	14"	16"	18"	21"	24"	30"	36"	42"	48"	55"	63"	79"
Diameter (mm)	369	406	496	552	618	770	927	1074	1226	1429	1623	2045
	VOLUME (L)											
1000	106	131	202	277	364	600	862	1232	1672	2555	3416	6141
1100	115	145	212	299	392	644	925	1317	1784	2697	3608	6345
1200	125	154	221	321	421	688	988	1403	1896	2840	3801	6550
1300	135	166	241	343	450	732	1052	1488	2008	3983	3993	6754
1400	145	178	261	366	479	776	1115	1574	2120	3126	4185	6959
1500	155	190	280	388	508	820	1178	1659	2232	3269	4377	7163
1600	165	202	299	410	536	864	1241	1745	2344	3412	4570	7368
1700	174	213	318	432	565	908	1304	1831	2456	3555	4762	7573
1800	184	225	338	454	594	952	1367	1916	2567	3698	4954	-
1900	194	237	357	477	623	995	1431	2002	2679	3841	5146	-
2000	204	249	376	499	652	1039	1494	2087	2791	3984	5339	-
2100	214	261	395	521	681	1083	1557	2173	2903	4127	5531	-
2200	224	272	415	543	709	1127	1620	2258	3015	4269	5723	-
2300	233	284	434	565	738	1171	1683	2344	3127	4412	5915	-
2400	243	296	453	588	767	1215	1746	2429	3239	4555	-	-
2500	253	308	473	610	796	1256	1810	2515	3351	4698	-	-

STANDARDIZED TANK MODEL												
Diameter	14"	16"	18"	21"	24"	30"	36"	42"	48"	55"	63"	79"
Diameter (mm)	369	406	469	552	618	770	927	1074	1226	1429	1623	2045
Cylindrical length (mm)	1378	1356	1344	1154	1320	1284	1272	1169	1140	2000	2000	1750
VOLUME (L)	140	170	245	310	450	710	1020	1360	1840	4018	5223	7675

► STEP 2: SELECT THE TOP AND BOTTOM OPENINGS

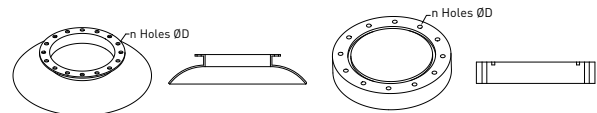
THREADED CONNECTIONS



Super tanks are available with a top or a bottom opening with a 4" threaded connection.
Available diameter sizes range from 14" to 36" diameter.

	A	B	C
4"	127	105.69	4"-8UN

FLANGED CONNECTIONS



6" and DN 400 are also available as a blind flange.

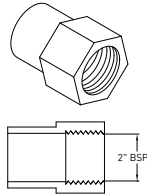
Available options:

Size	Raw material	Available on tank diameter
6"	Aluminium	14"-79"
DN200	PE/GRP	42"-79"
DN400	PE/GRP	55"-79"

...SUPER TANK

► STEP 3: SELECT SIDE HOLES AND TOP/BOTTOM DOME OPENINGS

WITH THREADED CONNECTIONS



Dimension	Type	Raw Material
2.5"	BSP	Noryl

A large choice of possible side hole connections, matching all drains or side mounts, is available. Similarly, top and bottom dome hole configurations can be obtained with or without blind flange for an easy maintenance or media replacement. **BELOW TABLE PRESENTS THE AVAILABLE CONFIGURATIONS.**

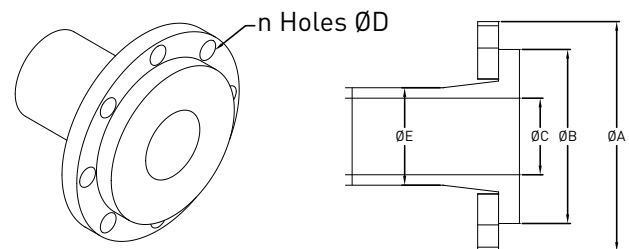
Tank diam.	2"	DN50	DN80	DN100	DN150	DN200
14"	XY	XY	XY	XY	-	-
16"	XY	XY	XY	XY	-	-
18"	XY	XY	XY	XY	-	-
21"	XYZ	XYZ	XYZ	XY	-	-
24"	XYZ	XYZ	XYZ	XYZ	-	-
30"	XYZ	XYZ	XYZ	XYZ	X	X
36"	XYZ	XYZ	XYZ	XYZ	X	X
42"	XYZ	XYZ	XYZ	XYZ	X	X
48"	XYZ	XYZ	XYZ	XYZ	X	X
55"	XYZ	XYZ	XYZ	XYZ	X	X
63"	XYZ	XYZ	XYZ	XYZ	X	X
79"	XY	XY	XY	XY	-	-

LEGEND X= TOP DOME HOLE Y=SIDE HOLE Z=BOTTOM DOME HOLE

WITH FLANGED CONNECTIONS



	A	B	C	nxD	E	G	H
DN50	165	125	51.4	12x8.5	18	102	63
DN80	200	160	73.6	4x18	20	138	90
DN100	220	180	90.0	8x18	22	158	110
DN150	-	-	-	-	-	-	-
DN200	340	295	164.6	8x22	30	268	200

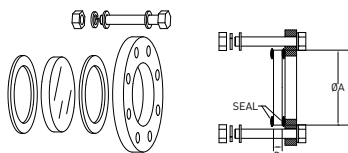


► STEP 4: SELECT OTHER POSSIBLE OPTIONS

Sight Glass

A sight glass is a useful option that allows checking the resin bed level or the water's turbidity and is mounted between two seals to prevent any leakages. Sight glasses are available in two sizes: DN80 and DN100.

	A	B
DN80	140	18/20
DN100	160	18/20

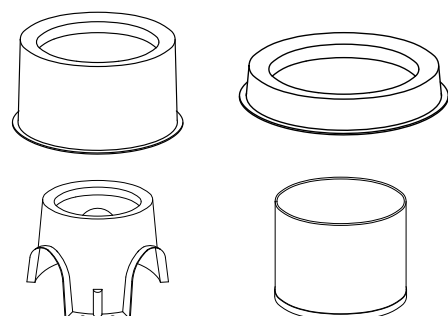


Lift lugs

Such lugs permit an easier positioning and handling of the tank.

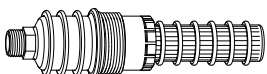
Bases

We offer different types of bases, that can solve space issue or facilitate the connection on the bottom hole.

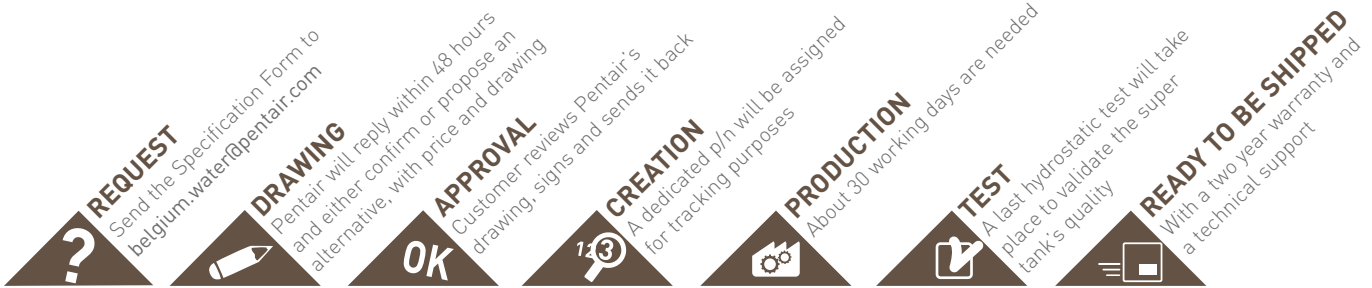


Aeration valve

An aeration valve is used to avoid a vacuum effect which can lead to a tank damage and can be mounted on the top hole.



SPECIFICATION FORM



STEP 1	Name
	Type of tank (inch) D: <input type="checkbox"/> Made to measure <input type="checkbox"/> Standard Model
	Diameter Tank:
	Inner Material: <input type="checkbox"/> PE <input type="checkbox"/> PVDF
STEP 2	Cylindrical length (mm) A:
	Volume [L]:
	Top opening:
	Bottom opening:
STEP 3	Blind flanges:
	Blind flanges:
	Blind flanges:
	Sidehole 1:
	Sidehole 2:
	Sidehole 3:
	Sidehole 4:
	Sidehole 5:
	Sidehole 6:
	Sidehole 7:
	Domehole 1:
	Domehole 2:
	Domehole 3:
Domehole 4:	
Domehole 5:	
STEP 4	Sight glass:
	Sight glass:
	Sight glass:
	Aeration valve: <input type="checkbox"/> Yes <input type="checkbox"/> No
	Lifting lugs:
	Base:
	Distribution system top*:
Distribution system bottom*:	
Color:	

PLEASE SCAN AND SEND THIS PAGE TO
PWB.ORDER.PRF@PENTAIR.COM

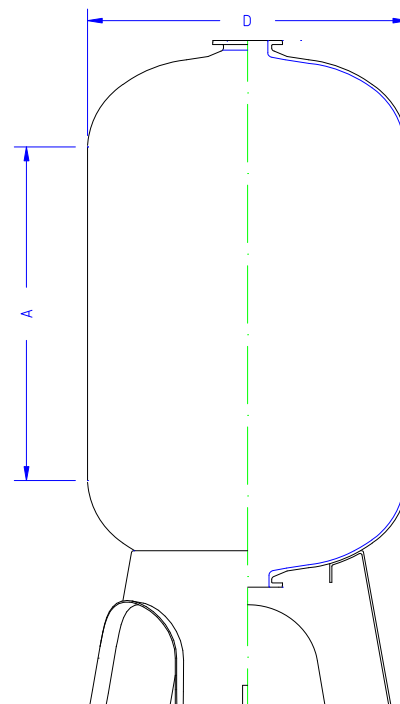
Company name:

Contact name:

Phone:

Email:

Date:



* Refer to the pricelist
Our current production lead time is about 30 working days.
Please note that this is only an indication, the effective lead time depends on production capacity and will be confirmed on our Order Confirmation within maximum 5 days after receipt of the signed approval drawing and your order.



www.pentairaquaeurope.com