









# CABINETS KITS RANGE

Quality products, specific configurations

# THE NEW CABINET KIT RANGE, MULTIPLE CHOICE FOR A PERFORMING AND TARGETED SOLUTION

In order to support our OEM customers and have a smarter positioning between performance and price, we redefined our cabinet kits to simplify this range. The objectives is to deliver quality products with specific configuration and guarantee an improved stock flexibility.

This revised cabinet kits offering is now more consistent with our Packaged product (=systems) range. Customers will have the possibility to purchase entry level cabinet kits like the Cly or Elegant cabinet or a mid-range offer composed by the Euro cabinet and the new Evolio. The offer is completed by the under sink Micro cabinet version and the TopCab also available in its new look with the red band.

		UNDER SINK VERSION	ENTRY LEVEL		MID RANGE	PREMIUM RANGE	
							
		MICROCABINET	ELEGANT	CLY	EURO	EVOLIO	TOPCAB
Color	Body	<input type="checkbox"/>	<input type="checkbox"/>	<input type="checkbox"/>	<input type="checkbox"/>	<input type="checkbox"/>	<input type="checkbox"/>
	Cover	<input type="checkbox"/>	<input checked="" type="checkbox"/>	<input checked="" type="checkbox"/>	<input checked="" type="checkbox"/>	<input type="checkbox"/>	<input checked="" type="checkbox"/> <input checked="" type="checkbox"/>
Family size	1 to 3	<input type="checkbox"/>	<input type="checkbox"/>	<input type="checkbox"/>	<input type="checkbox"/>	<input type="checkbox"/>	<input type="checkbox"/>
	4 to 7	<input type="checkbox"/>	<input type="checkbox"/>	<input type="checkbox"/>	<input type="checkbox"/>	<input type="checkbox"/>	<input type="checkbox"/>
Salt storage	5	<input type="checkbox"/>	<input type="checkbox"/>	<input type="checkbox"/>	<input type="checkbox"/>	<input type="checkbox"/>	<input type="checkbox"/>
	25	<input type="checkbox"/>	<input type="checkbox"/>	<input type="checkbox"/>	<input type="checkbox"/>	<input type="checkbox"/>	<input type="checkbox"/>
	50	<input type="checkbox"/>	<input type="checkbox"/>	<input type="checkbox"/>	<input type="checkbox"/>	<input type="checkbox"/>	<input type="checkbox"/>
Salt storage simplified accessibility		<input type="checkbox"/>	<input type="checkbox"/>	<input type="checkbox"/>	<input type="checkbox"/>	<input type="checkbox"/>	<input type="checkbox"/>
Grid		<input type="checkbox"/>	<input type="checkbox"/>	<input type="checkbox"/>	<input type="checkbox"/>	<input type="checkbox"/>	<input type="checkbox"/>
Tank outside cabinet		<input type="checkbox"/>	<input type="checkbox"/>	<input type="checkbox"/>	<input type="checkbox"/>	<input type="checkbox"/>	<input type="checkbox"/>

## ▶ MICROCABINET

With the dimension of a computer case Microcabinet is the most compact system for under sink installation present on the market.



### COMMERCIAL BENEFITS

- Simplified maintenance and installation
- Container for tan condensation

### TECHNICAL FEATURES

- Outstanding pressure vessel
- Bottom base



### VALVES:

- Fleck 5600 SXT
- Fleck 5800 SXT - LXT
- Autotrol 255
- Autotrol Performa
- Autotrol 368
- SIATA V132 SFE
- SIATA V119



### PRESSURE VESSELS:

- 6x13
- 6x18

## ▶ ELEGANT

Available with a blue cover and a white body, this cabinet is amongst the most compact ones from the market. Its unique

design is easily recognizable, with the front areas made of large transparent surfaces, for an immediate access to the valve.



### COMMERCIAL BENEFITS

- Cover all residential installations
- Certified for the whole European Market

### TECHNICAL FEATURES

- Available in 3 sizes
- RoHs and Reach raw materials



### VALVES:

- Fleck 5600 SXT
- Autotrol 255
- Autotrol Performa
- Autotrol 368
- SIATA V132 SFE
- SIATA V119



### PRESSURE VESSELS:

- 7x17 (8.8lt)
- 7x30 (16.8lt)
- 8x30 (22lt)
- 7x35 (20.4lt)
- 8x35 (25.7lt)
- 9x35 (31.3lt)
- 10x35 (38.9lt)

## ► CLY

The Cly cabinet is the evolved version of the Elegant line. Its main feature lies with its ability to provide a direct access to the salt compartment, for an eased control and refill

of the salt level. Available with a blue cover and a white cabinet body, Cly is a compact and freshly designed cabinet.



### COMMERCIAL BENEFITS

- Cover all residential installations
- Certified for the whole European market
- Visual access to the valve display

### TECHNICAL FEATURES

- Available in 3 sizes
- RoHs and Reach raw materials
- Translucent cover lid



### VALVES:

- Fleck 5600 SXT
- Autotrol 255
- Autotrol Performa
- Autotrol 368
- SIATA V132 SFE
- SIATA V119



### PRESSURE VESSELS:

- 7x17 (8.8lt)
- 7x30 (16.8lt)
- 8x30 (22lt)
- 7x35 (20.4lt)
- 8x35 (25.7lt)
- 9x35 (31.3lt)
- 10x35 (38.9lt)

## ► EURO

Euro cabinet was designed to offer the highest salt compartment capacity. Its container can contain up to 60kg of salt pallets, reducing salt

refill needs. The Euro cabinet is available with a blue cover and white cabinet body

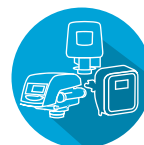


### COMMERCIAL BENEFITS

- Cover all residential installations
- Certified for the whole European market
- Extended time between salt refills

### TECHNICAL FEATURES

- Available in 3 sizes
- RoHs and Reach raw materials
- Up to 60kg of salt



### VALVES:

- Fleck 5600 SXT
- Autotrol 368
- SIATA V132, SFE, V119
- Can store up to 60kg of salt



### PRESSURE VESSELS:

- 8 x 18 (11,4 lt),  
10 x 16 (16,1 lt)
- 7 x 30 (16,8 lt),  
8 x 30 (22 lt)
- 7 x 35 (20,4 lt),  
8 x 35 (25,7 lt)
- 9 x 35 (31,3 lt),  
10 x 35 (38,9 lt)

## ▶ EVOLIO

Evolio was developed as an easy-to-use and complete cabinet with a modern and attractive design. Users can have a direct access to the salt compartment with a

simple touch on the salt lid. Its cover is made from ABS plastic, providing an enhanced resistance to the shocks. The Evolio cabinet is available with a white cover and a white body.



### COMMERCIAL BENEFITS

- Increased robustness
- Eases the salt load and the maintenance in general

### TECHNICAL FEATURES

- Thickness of the cover body (5 millimeters)
- Swinging salt opening with a funnel shape design



### VALVES:

- Fleck 5600 SXT
- Fleck 5800 SXT - LXT
- Autotrol 255
- Autotrol Performa
- Autotrol 368
- SIATA V132 SFE
- SIATA V119



### PRESSURE VESSELS:

- 7x17 (8.8lt)
- 7x30 (16.8lt)
- 8x30 (22lt)
- 7x35 (20.4lt)
- 8x35 (25.7lt)
- 9x35 (31.3lt)
- 10x35 (38.9lt)

## ▶ TOPCAB

The Topcab is the high-end cabinet, built with high quality materials. Its components were carefully selected to facilitate its installation and maintenance. The pressure vessel is separated from the brine tank, restricting the development of salt bridges, which helps maintaining the highest

sanitary standard. Its base was studied to contain the condensation of the pressure vessel, in order to minimize the risk of water overflow. Topcab is supplied with a salt grid to facilitate the creation of the brine and is available in two configurations : red cover and white body or blue cover and white body.



### COMMERCIAL BENEFITS

- Simplify maintenance and installation
- Container for tan condensation

### TECHNICAL FEATURES

- Outstanding pressure vessel
- Bottom base



### VALVES:

- Fleck 5600 SXT
- Fleck 5800 SXT
- Autotrol 255
- Autotrol Performa
- SIATA V132 SFE
- SIATA V119



### PRESSURE VESSELS:

- 7x17 (8.8lt)
- 8x18 (11.4lt)
- 7x35 (20.4lt)
- 8x35 (25.7lt)
- 9x35 (31.3lt)
- 10x35 (38.9lt)



[www.pentairaquaeurope.com](http://www.pentairaquaeurope.com)